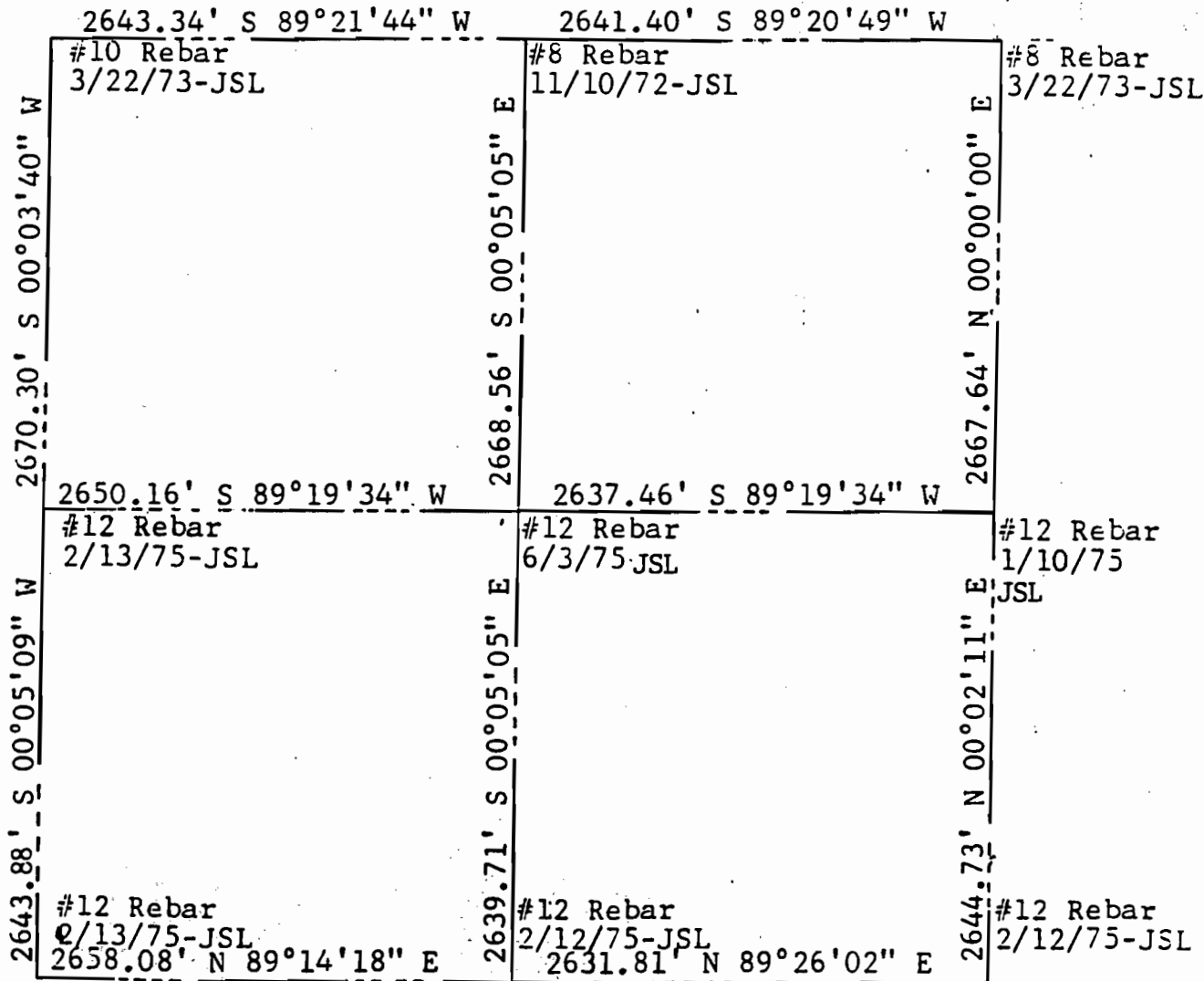




SECTION BREAKDOWN INFORMATION

Scale: 1" = 1000'



Angular error: ?
 Linear error of closure after angular adjustment: 0.0794 meters
 Total traverse length: 6441.3 meters
 Survey precision: 1/81,071
 Job No.: JA0875

SECTION 3, TOWNSHIP 4 SOUTH, RANGE 69 WEST
 DATA BY: JOHN S. LAMBERT LS #13212
 FIELD DATE: Feb. 21, 24, 25, 26, 1975
 BASIS OF BEARINGS: East line of the NE 1/4 - assumed
N 00°00'00" E