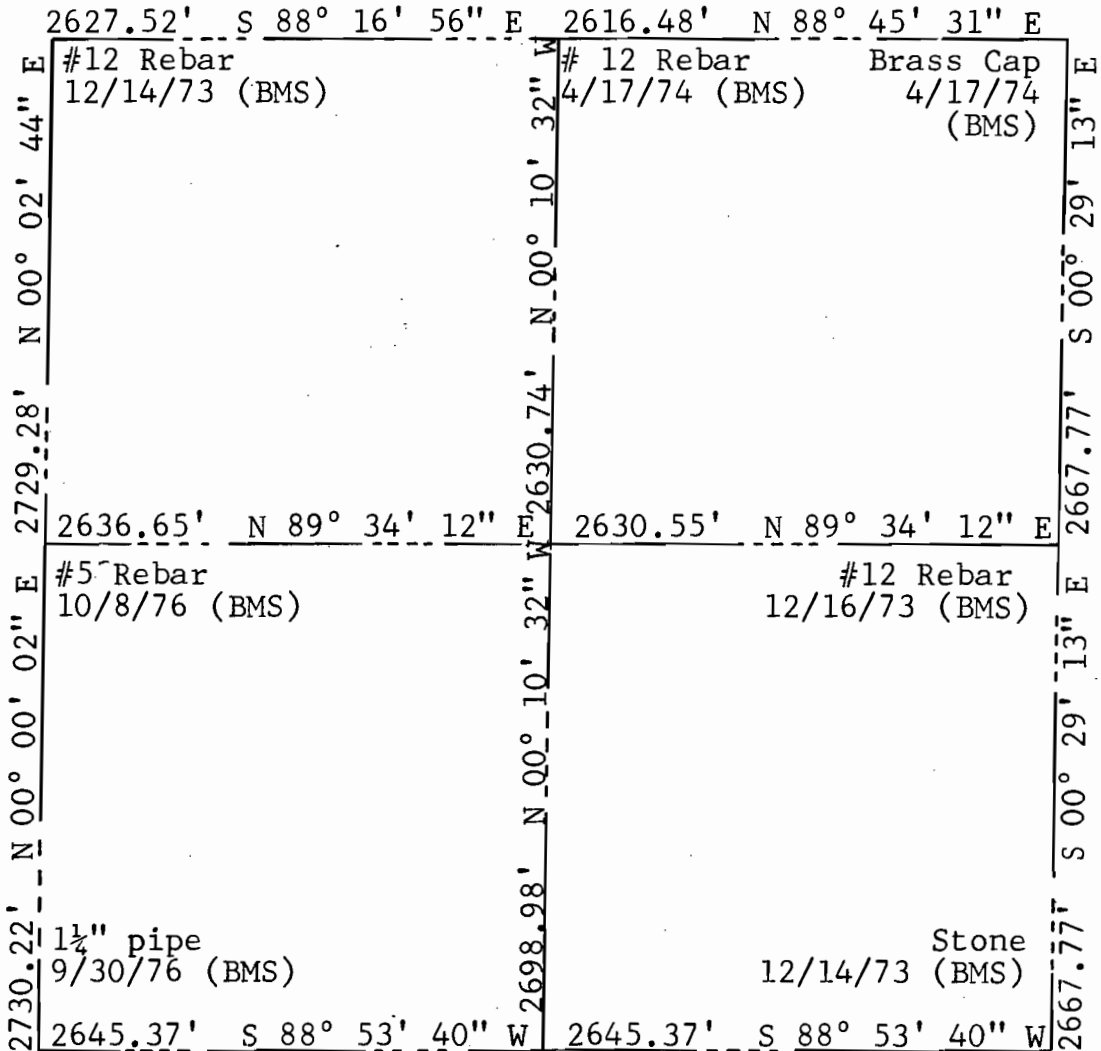




SECTION BREAKDOWN INFORMATION

Scale: 1" = 1000'



ANGULAR ERROR OF CLOSURE: 00° 00' 36.00"
 LINEAR ERROR OF CLOSURE AFTER ANGULAR ADJUSTMENT: 0.28'
 TOTAL TRAVERSE LENGTH: 24,798.30'
 SURVEY PRECISION: 1/88,081
 JOB NO.: JN2376

SECTION 13, TOWNSHIP 4 SOUTH, RANGE 70 WEST
 DATA BY: Steven C. Steinberger
 DATE: October 4, 5, and 8, 1973
 BASIS OF BEARINGS: The West line of the Southwest Quarter (SW¼) assumed N 00° 00' 02" E

