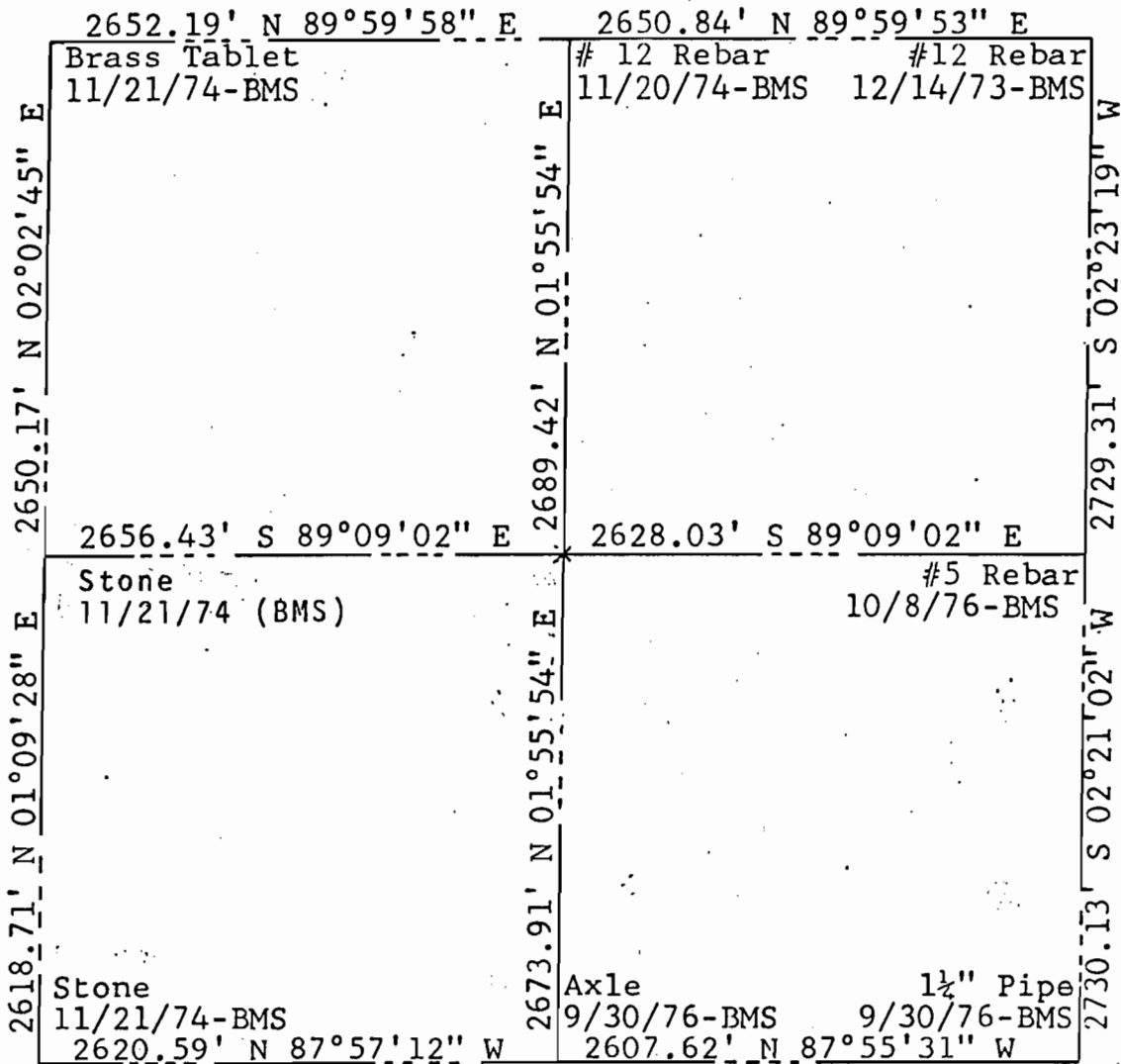




SECTION BREAKDOWN INFORMATION

Scale: 1" = 1000'



ANGULAR ERROR OF CLOSURE: 00°00'45.00"  
 LINEAR ERROR OF CLOSURE AFTER ANGULAR ADJUSTMENT: 0.53'  
 TOTAL TRAVERSE LENGTH: 26,788.19'  
 SURVEY PRECISION: 1/50,574  
 JOB NO.: JN2376

SECTION 14, TOWNSHIP 4 SOUTH, RANGE 70 WEST  
 DATA BY: Steven C. Steinberger  
 DATE: August 1974 and April 25, and 26, 1977  
 BASIS OF BEARINGS: The North line of the Northwest  
Quarter (NW $\frac{1}{4}$ ) assumed N 89°59'58" E