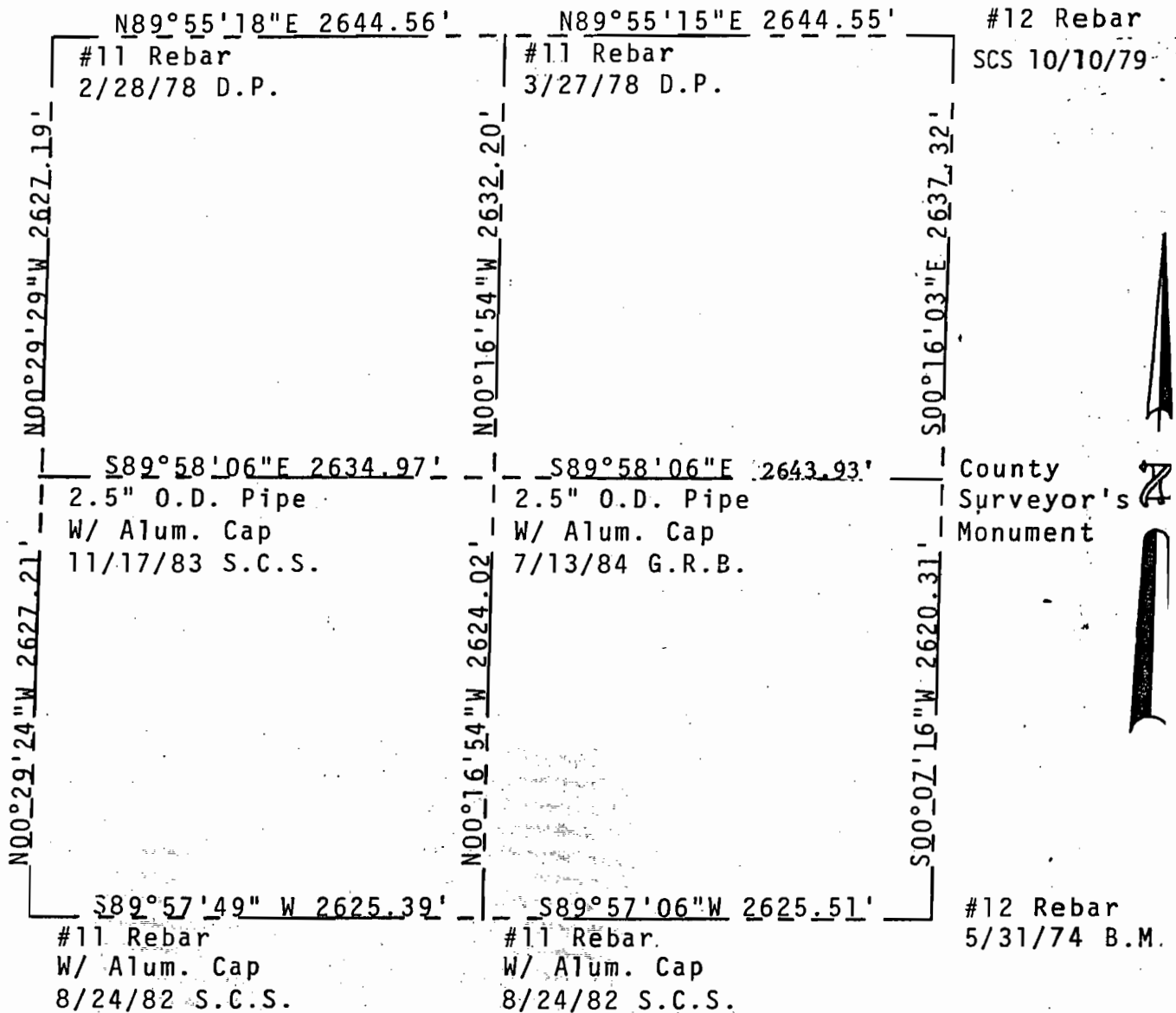


City of Lakewood, Colorado
 Public Works Department
 Engineering Division
 303-987-7900
 www.lakewood.org

SECTION 28
 T 4 S, R 69 W
 DATA BY: J. Halverson/M. Donnell
 DATE July 11, 1984
 JOB NO. DE1781
 SCALE 1" = 1000'

SECTION BREAKDOWN INFORMATION



ANGULAR ERROR OF CLOSURE: 00°-00'-10"
 LINEAR ERROR OF CLOSURE AFTER ANGULAR ADJUSTMENT: 0.157'
 TOTAL TRAVERSE LENGTH: 21,602
 SURVEY PRECISION: 1:137,593
 BASIS OF BEARINGS: Bearing taken from Solar Observation
on 4/27/84; Solar bearing north line of N.W.
quarter, N89°55'18"E